

*Passages*TM

walk-in baths



accessible | safe | therapeutic

CLARKE

ACCESSIBILITY



Passages™ walk-in baths represent the latest product advancement in accessible bathtubs. The wide walk-in side entry doors along with the low, step over threshold make it easy and safe to enter and exit the bath. The comfortable 17" high built-in seating provides a relaxing position for enjoying independent bathing. The ergonomic door latch features an extra long handle that provides additional leverage while securing the door. A built in assistance bar on the sidewall of the bath and a textured, slip resistant floor add additional safety and convenience. Passages baths are constructed of Lucite® cast acrylic, a safe, clean, non-porous material known for its high gloss, easy maintenance, stain and scratch resistance, and durability. Passages walk-in baths provide a soothing, comfortable and safe bathing experience. There is simply no comparison to the durability and stain resistance of Passages cast acrylic walk-in baths.



FEATURES



Walk-in Door – The low threshold of the walk-in door makes it easy to step into a Passages™ bathtub. The Model 3260 features a 19" wide door while Models 2853, 3053 and 3055 have an 18" wide door. The Model 2651 has a 16" wide door for easy entry and exit.

Removable Skirt Panel – Attaches to the steel frame with fully concealed, heavy-duty magnets and is easily removable, providing full access to the framing, plumbing connections and mechanical components of the bath.



Comfortable Built in Seating – A chair height seat is molded into the bath 17" from the floor. It is safe, easily accessible and provides a relaxing bathing position.

Built in Safety – Passages™ bathing fixtures feature a textured, slip resistant bottom and softly rounded edges and corners for safety and comfort.

Comfort Gauge with Alarm – The gauge features an LED temperature display that is easy to read, even without glasses. It also features an audible alarm for safety.



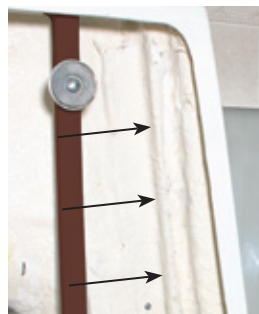
Durable Door Seals – Durable door seals ensure that Passages™ walk-in door will not leak. Models 3260, 3053 and 3055 feature double door seals while Models 2853 and 2651 utilize single seals. Seals are replaceable should they be damaged.

Heavy-Duty Anchor and Hinge – A 1/4" heavy-duty steel plate inside the tub body adds structural integrity and provides a stabilizing foundation for the heavy-duty aluminum hinge and aluminum frame inside the door. This enables the door to withstand a 500-pound load.

Ergonomic Door Latch and Handle – The extra long handle is designed to provide additional leverage while securing the door. The handle has been ergonomically designed for easy use by those who may have limited strength or mobility. The latch can be secured with one hand.

Standard Assistance Bar – The built in assistance bar on the sidewall of the bath adds safety and convenience and is standard in Polished Chrome. Optional finishes include White and Biscuit.

Optional Assistance Bar – L-shape assistance bars offer support to assist you from the seat of the tub and a parallel bar to provide balance when entering and exiting the tub. Available in Polished Chrome, White and Biscuit.



Stabilizing Steel Door Frame – A gusseted U-shape steel frame is built into the door frame during manufacture. It provides stabilization for the entire door and door frame.

Tubular Steel Frame – The 1" tubular steel frame provides structural integrity and features a protective coating to resist rust. The adjustable footing enables you to level the bath, regardless of the levelness of the floor. The feet can be fastened directly to the floor should you prefer.

Adjustable Leveling Legs – The bathtub can be leveled and adjusted to the proper height using adjustable leveling legs.

Large, Easy to Use Switch – A large, easy to see and use single push-button switch operates the hydrotherapy bath and air . Total Massage baths feature dual push-button switches, one for hydrotherapy and one for air massage.

Adjustable Hydro Massage Jets – High volume, adjustable jets that go from full on to full off in a quarter of a turn are standard on Passages™ whirlpool models. These jets enable you to adjust the flow and power of each individual jet for a personalized massage. Available in Polished Chrome, White and Biscuit.



10* CAST ACRYLIC MODELS DESIGNED TO FIT ANY APPLICATION * (Left and Right Drains)

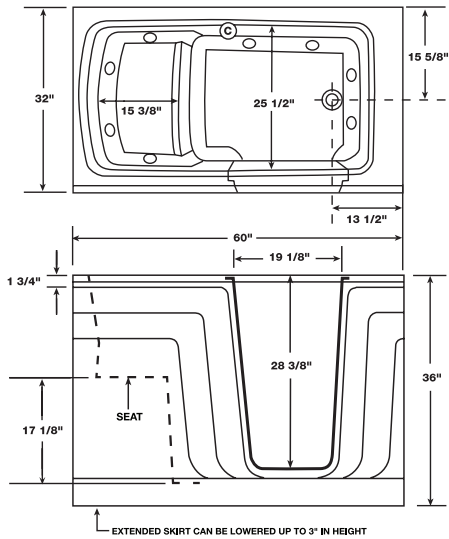
Passages™ 3260

Size:
60" l x 32" w x 33" h

Water Capacity:
116 gallons

Drain Position:
End

Door Seal:
Double



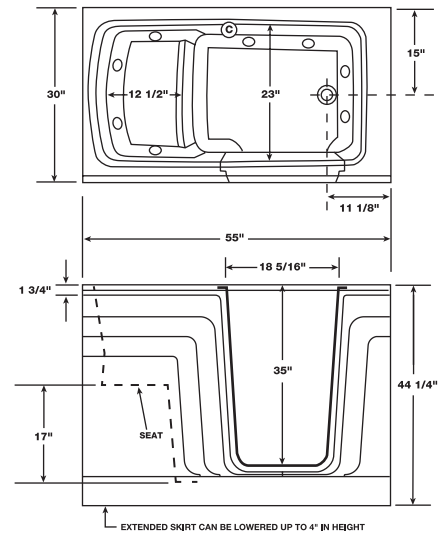
Passages™ 3055

Size:
55" l x 30" w x 44 1/4" h

Water Capacity:
125 gallons

Drain Position:
End

Door Seal:
Double



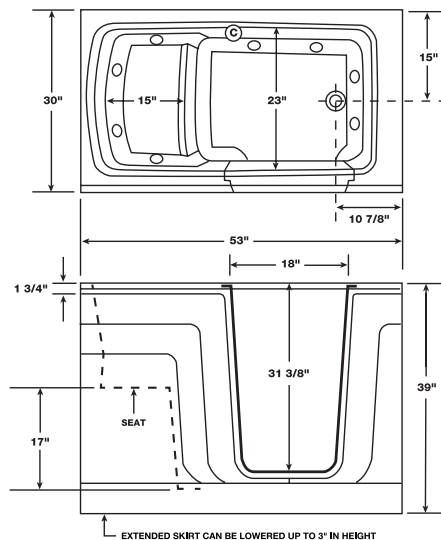
Passages™ 3053

Size:
53" l x 30" w x 36" h

Water Capacity:
112 gallons

Drain Position:
End

Door Seal:
Double



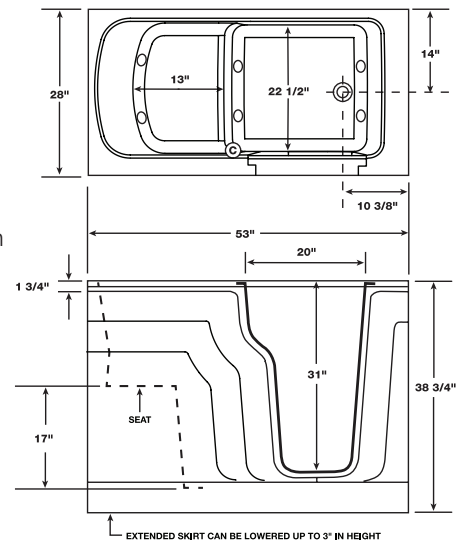
Passages™ 2853

Size:
53" l x 28" w x 35 3/4" h

Water Capacity:
116 gallons

Drain Position:
End

Door Seal:
Single



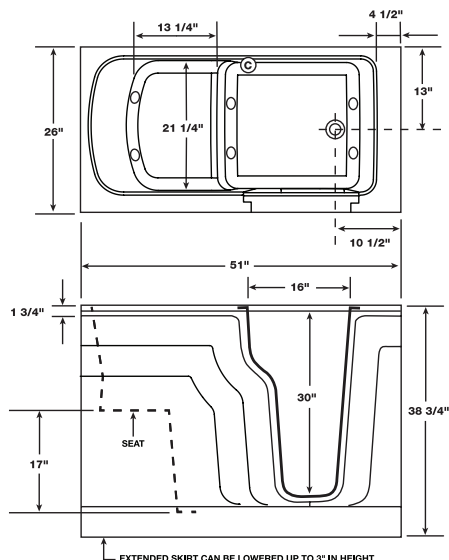
Passages™ 2651

Size:
51" l x 26" w x 35 3/4" h

Water Capacity:
108 gallons

Drain Position:
End

Door Seal:
Single



Warranty and Codes

Clarke Passages™ products have complete installation, maintenance, and care and cleaning instructions. They feature a 5-year limited warranty. Clarke Passages™ products are IAPMO approved and meet or exceed ANSI Z124.1-1995, ASME A112, and 19.7-M-1995, UL 1795.

In an effort to continually improve our products, Clarke may make design changes from time to time. We reserve the right to ship newly designed product to fill any order unless prior written agreements exist.



SPECIFICATIONS

Standard Features

- Lucite® acrylic construction
- Models 3260, 3055 and 3053 feature dual door seals and offer plenty of room for dual shower use
- Models 2853 & 2651 feature single door seals, and are convenient for installation in tighter spaces
- Comfortable 17" high seat
- Textured slip resistant floor
- Softly rounded edges and corners
- Ergonomic door handle
- Adjustable leveling feet
- Stabilizing steel U-frame encased around the door opening
- Rust resistant steel main frame
- Right or Left hand drain configuration
- Door 500lb load test



System Features

Air Massage:

- Multiple air jets located in the radius of the seat and floor
- Heated blower system
- Push-button On/Off switch
- Automatic delayed purge cycle to dry the air channels



Hydrotherapy Bath:

- The 3260, 3053 and 3055 feature 8 color matched adjustable and directional hydro jets, while the 2853 and 2651 have 6 jets
- Push-button On/Off Switch
- Hidden air induction valves
- 120v, 6.3 amp pump motor



Total Massage:

- Combines the benefits of air massage and hydrotherapy



Whirlpool Options

- Standard colors: White and Biscuit
- Hardware finish: White, Biscuit, optional Polished Chrome and Satin Nickel
- Chromatherapy: 3 light system with electronic control pad
- Chromatherapy remote control

Chromatherapy – As an optional feature, the chromatherapy system consists of 3 super bright LED lights that can be added to any Passages™ system tub. These lights illuminate the water and display any color option that the bather chooses.



In-line Bath Heater –

Clarke's optional in-line heater maintains a comfortable temperature when the pump is activated, and can be added to either the Hydrotherapy or Total Massage system.



accessible | safe | therapeutic



Passages™ walk-in baths offer the freedom of easy and safe access, so you can enjoy a satisfying and sanitizing bath. Each walk-in tub features adjustable legs that allow the tub to be properly leveled on site and offer expanded options for accessibility. Other standard features such as a wide door, low threshold, assistance bar, 17" high seat and a textured slip resistant floor, add to the bathing experience. Hydrotherapy, Air Massage and the combination Total Massage complete the options available to you. Passages™ walk-in baths are designed for lasting durability, and each tub is backed by our 5 year limited warranty.

Clarke bathing fixtures are manufactured in America
and factory tested prior to shipping.

CLARKE

Therapeutic Walk-in Baths • Therapy Baths • Air Baths • Acrylic Showers

www.clarkeproducts.com

Corporate Offices
820 Central Drive, Colleyville, TX 76034
800-426-8964 • FAX 817-416-4204



Waco One
2100-B Orchard Lane, Waco, TX 76705
254-759-8812 • FAX 254-759-1618